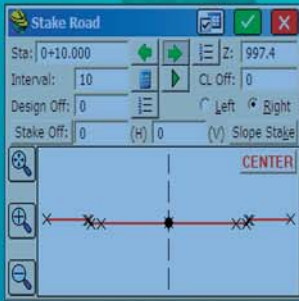


Carlson SurvCE 2



Autodesk[®]
Authorized Developer
Authorized Unique Application Reseller
Authorized ISV Partner

 **Carlson**[®]
www.carlsonsw.com

Carlson SurvCE 2 — Powerful features to help you do more in less time

Easy to use

- Tab-Based MENU Structure. All commands are visible in each menu, preventing the need for Up-Down Arrow Keying to view options.

Enhanced graphics

- Collect points in the graphics mode. Points plot as they are shot in the field or entered. There is no need to switch between screens to view your points.

Read in LandXML

- Supports LandXML points, DTM, graphics, alignments, profiles and sections.

New Features

New Look

- SurvCE Version 2 has a new colorful look. Icons have been standardized to create continuity throughout the product, while modernizing the user experience.

Hot List

- The new Hot List lets users jump to the SurvCE 2 routines that previously had shortcuts without having to memorize key strokes. It also provides shortcut functionality to devices without keyboards.

Volumes

- SurvCE 2 can compute volumes between two surfaces, one surface and an elevation or simple stockpile volumes. Surfaces can be defined by graphical entities and points or by Carlson TIN files.

Help

- The software has optional on-board help files. These files are the entire user manual and can be installed separately. Click on the SurvCE icon and select Help to get the help document that pertains to the current routine.

Leveling

- SurvCE 2 can be used to collect trigonometric level loops and digital level loops. Loops can be processed and adjusted on the device and all existing project coordinate points can be updated.

GPS Networks

- SurvCE 2 supports several GPS network protocols, such as NTRIP, TCP and UDP.

Localization

- The software supports an unlimited number of localization points. All project scale settings and coordinate system options have been centrally located in the localization dialog.

Angle Sets in Store Points

- SurvCE 2 allows users to "Configure" how each reading is measured with regard to direct and reverse options (Formerly Known as SS/Trav). If direct and reverse readings are taken at the backsight, then any direct and reverse foresight will be considered an angle set and will be reduced accordingly. This eliminates the need to use a separate routine for angle sets.

Job Settings

- SurvCE 2 has the option to use a template DXF file for new jobs so that all layers and colors are automatically created per your company standard.

- It has the option to auto-load cutsheets and control files from the previous job for those users that work on one site continuously

- SurvCE 2 has the ability to turn off the auto-descriptions in stakeout and completely customize how all stakeout routines behave

- Point Number by Interval – SurvCE 2 can interval the point ID by using the "Add to Next Pt ID" option. To number all points on the odd numbers, start at 1 and use 2 in this field.

Feature Coding

- SurvCE 2 can collect parallel lines using the offset horizontal and offset vertical line drawing commands and close a rectangle by three points using the rectangle command. In the settings section of Special Codes, the user can even auto compute and store the additional points at the line vertices that were created by the software.

- SurvCE 2 allows the user to code in numerous coding styles that may be defined by their office package.

Instrument Switching

- SurvCE 2 keeps track of every instrument completely separate. This includes all base stations, rovers and total stations, so that mixing equipment is easy. Simply configure your gear once and forget it. The instrument icon has been enhanced to allow you to switch between your current equipment.

Station Equations

- SurvCE 2 supports station equations.

Reference Alignments

- SurvCE 2 supports associating a reference alignment for station reporting. This allows the user stake a 3' offset to a curb line that is not parallel to the CL of the road, stop at all critical curb stake locations and have the station be reported based on the CL alignment.

Skew Angle Staking

- SurvCE 2 supports staking offsets on a skew angle and provides the option to stake offset intersections and bisectors at angle points and the radius or PI point of an arc without leaving the Stake Line/Arc routine.

SurvCE 2 Has More:

- Supported Instruments;
- Supported File Formats;
- Supported Handheld Devices.

CarlSync file transfer, file backup and synchronization utility.

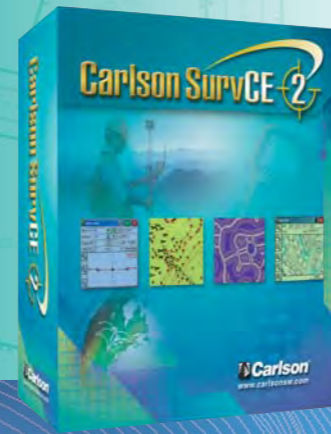
Utilizing internet connections, your data collector files can be synchronized with the CarlSync Server. This server is a central depository for updated data collector files and for deposited files from an office connection. Both the field crews and the office staff can deposit files onto the server. Therefore files can be uploaded to the server as well as downloaded from the server. Connection to the internet can be made via cellular, WiFi, or ActiveSync.

- Transfer your data collector files back to a secure web server while in the field. Save the drive time back to the office.

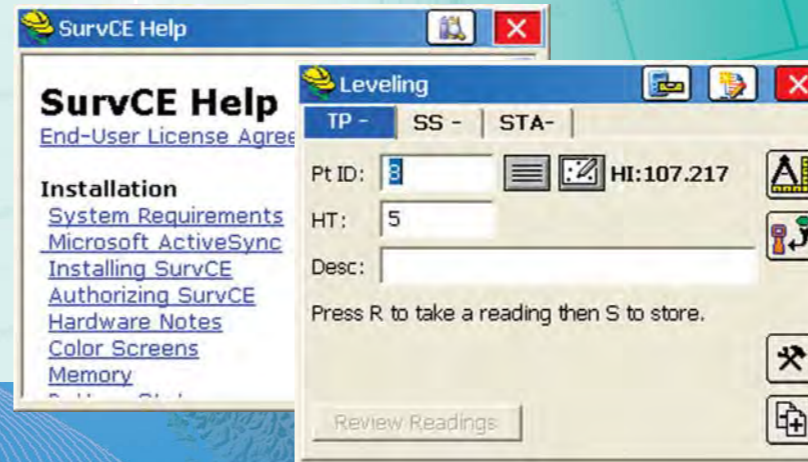
- Backup your data files on a secure web server.

- Receive data sets or work-orders from the office, while in the field.

- Send a file from one data collector in the field to another designated data collector.

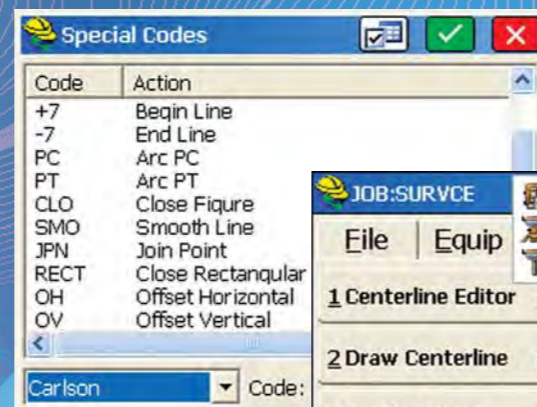


Help – Click to get the help document for the current routine.



Leveling – Collect and process trigonometric & digital level loops.

Feature Coding – Add numerous coding styles & functions.



Instrument Switching – SurvCE keeps track of every instrument, so switching equipment is fast and easy.



Tab-Based MENU Structure – All commands are visible in each menu.

"I know of no other field and office software combination that works together as seamlessly as Carlson SurvCE.... The ability to transfer coordinate files and alignment files back and forth with no conversion is a big time saver."

— Kevin P. O'Connor, L.S.,
Urban Engineering & Associates, Inc.

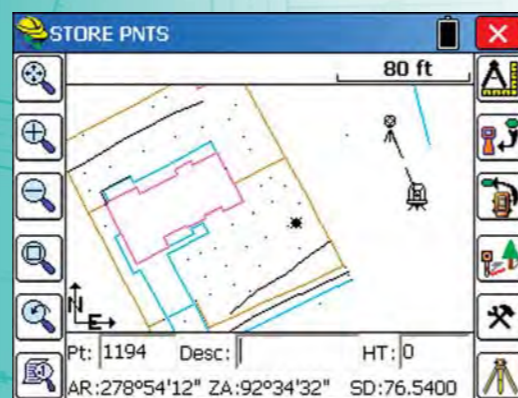
Point Number by Interval – Advanced point ID controls.



Job Settings – Customize layers, colors, cutsheets, descriptions and much more.

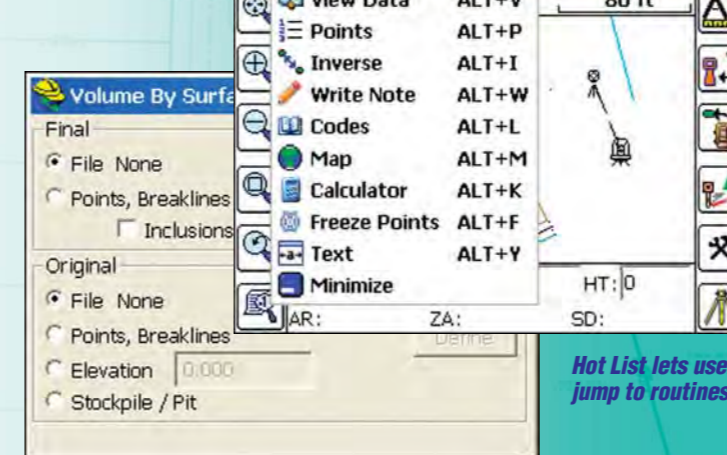


Carlson SurvCE 2 supports all major manufacturers' conventional and robotic total stations and RTK GPS systems.



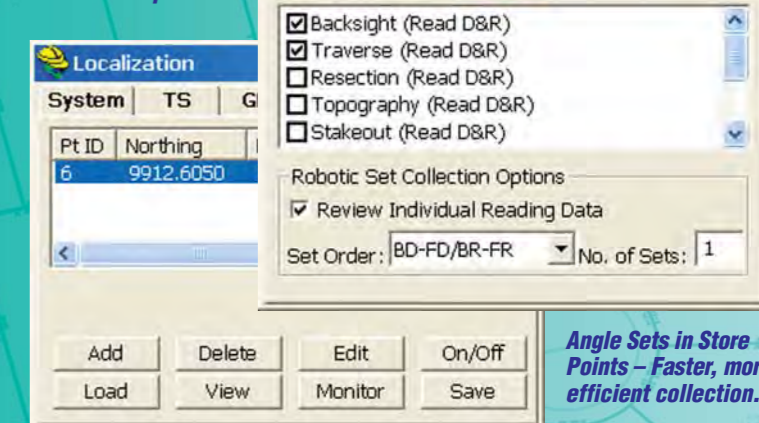
Collect points in the graphics mode.

Compute volumes in SurvCE 2.



Hot List lets users jump to routines.

Supports an unlimited number of localization points.



Angle Sets in Store Points – Faster, more efficient collection.

Carlson SurvCE 2

Carlson Tech Support and Training is Unmatched

Carlson College

Where Education and Training Come Together

Training Direct from the Manufacturer

Employers pay for training one way or the other. Self teaching means time, unproductive time spent on trial and error learning. Our training, "Direct From the Manufacturer," allows attendees to be production ready immediately following training. Our Continuing Education follows by providing a growth path to expert status.

Get Professional Training from the Carlson Experts

Carlson Software offers professional training at our facilities in Virginia, Kentucky and Massachusetts. In addition, Carlson Software offers regional training throughout the U.S. Our approach to training is the T.I.E. Training method, where we teach the software Tools and Imaginative use of Tools combined with industry Expertise. Classes are kept small, and each student has their own workstation for hands-on exercise. All training materials and books are yours to keep afterwards.

Carlson College offers:

- Professionally Delivered Training Sessions, CEU's/PDH's Offered
- Multiple Offerings, Forums & Locations
- Instruction by Industry Experts
- Consulting on Business Processes, Systems Integration, CADD Standards

Please refer to our web site for our training calendar and class offerings.

For more information on the new Carlson College or training, please contact Harry Ward or Reiko Lewis at 800-989-5028, or email hward@carlsonsw.com.

Technical Support

Since 1983, a Carlson trademark has been FREE technical support. It is incumbent upon us to design software that is so intuitive that we don't get barraged with phone calls. This design philosophy allows us to provide this service at no additional cost. Our technicians become part of your team, helping in anyway necessary. Carlson Software's foundation is in supporting our customer's needs. This objective will be central to our company's success well into the 21st century.

Carlson Software Products



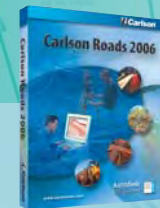
Carlson Civil Suite 2007
Without a doubt, these four powerful programs, working together, create the ultimate civil package.



Carlson Field 2007
CAD-based data collection! Collection data directly in a DWG file. No download into CAD needed!



Carlson Civil 2007
Powerful automation, and unmatched ease-of-use for road design, site and subdivision design. Works with AutoCAD® and AutoCAD® Map.



Carlson Roads 2007
Road design made easy. From simple subdivision streets to super elevated highway design.



Carlson Survey 2007
Our most productive and intuitive AutoCAD-based survey solution yet. Available for AutoCAD or Standalone with built in AutoCAD.



Carlson Survey Desktop
A complete set of easy-to-use survey tools for the acclaimed Autodesk Land Desktop.



Carlson Hydrology 2007
Perform watershed analysis and create rainfall maps, design pipe culverts, sewer piping, orifices. With weir design & HYDRA®.



Carlson Natural Regrade
Natural Regrade with GeoFluv™ applies fluvial geomorphic principles to upland landform design.



Carlson GIS 2007
Includes tools for data capture and linking, data labeling, import/export of SHP files, polygon topology creation and analysis, and more.



Carlson GIS-CE
GIS GPS data collection. Store multiple attributes for each shot quickly and easily.



Carlson Takeoff 2007
Carlson Takeoff is the most complete and powerful site estimating AutoCAD-based software on the market.



Carlson PointCloud
Process laser scan data to generate models, breaklines and points.

For more information on training or the new Carlson College, please call 800-989-5028

 **Carlson**[®]
www.carlsonsw.com

For sales information or to locate a reseller please call:
800-989-5028

Autodesk[®]
Authorized Developer
Authorized Unique Application Reseller
Authorized ISV Partner