

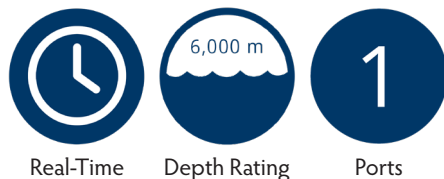
AML-1 RT

The AML-1 series of instruments is a highly configurable sonde designed for a wide range of data collection applications. The '1' designation refers to the number of sensors that may be installed on the instrument's endcap.

Typical Configurations include:

- Sound Velocity (SV)
- Turbidity (Tu)
- Pressure / Water Level (P)
- Conductivity Temperature (CT)

The RT designation (ie. AML-3 RT) stream data while in-situ. Power and communication to this instrument is facilitated via a waterproof connector. These instruments rely on external power for operation and the application of this power is automatic when voltage is applied. These instruments are commonly used in measurement of sound velocity on sonar systems, moored applications, buoys, underwater observatories, and ROVs. However, the AML-1 is compatible with an X2 series of Xchangeable sensors.

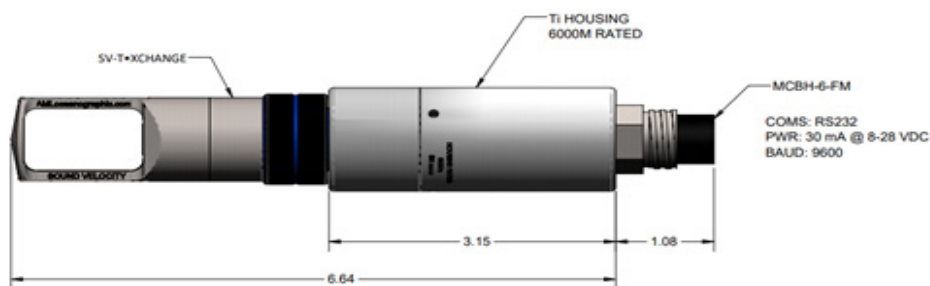


Real-Time

Depth Rating

Ports

Max. Depth	6000m
Number of Ports	1
Communication	RS232
Input Voltage	8-26 VDC
Pressure Housing	Titanium
Dimensions	80 x 33 mm
Weight in Air	0.27 kg
Weight in Water	0.20 kg



Key Uses & Benefits:

- **SV Ray Tracing Corrections:** Measure Sound Velocity at MBES transducer down to 6000m
- **In-Situ Real-Time Measurements:** Simplified in-situ measurements of environmental parameters
- **Real-time Data Streaming:** Collect and apply measurements in real time
- **Flexible:** Custom configure a single instrument for multiple applications