



## Seabed Portable Lightweight Multibeam Set

Seabed has introduced the first lightweight multibeam set in the world that can be transported as check-in luggage with any airline with no extra charge. The SPLMS is ideal for projects where rapid mobilization is required and where logistical challenges are considered due to the simple deployment.

### Set components

- **Norbit WBMS**

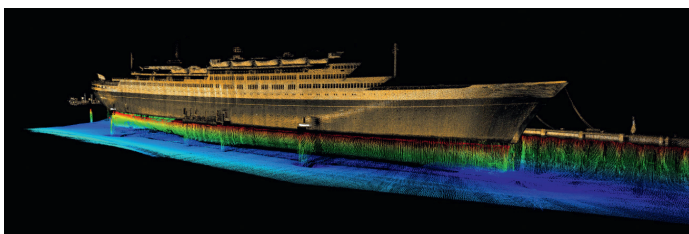
The ultra-compact wideband sonar has low power consumption. The new technology allows long range real time data collection whilst simultaneously achieving very high range resolution. The sonar has an integrated SV sensor and capabilities to record snippets, water column and side scan data.

- **Seabed SGR7-D Sx Fully integrated GNSS Receiver**

From standalone meter-level to RTK centimeter level positioning, the SGR7 is flexible to meet your positioning needs. With an integrated 4G modem, gigabyte switch, onboard intelligence, INS ready, display, 555 channels and comprehensive support for all current GNSS signals, the SGR7 is a state of the art GNSS receiver.

- **SBD-IMU-Sx**

Using sensor fusion in bringing together two different but complementary technologies: GNSS positioning and inertial navigation. The absolute accuracy of GNSS positioning and the stability of inertial measurement unit (IMU) gyro and accelerometer measurement are tightly coupled to provide an exceptional 3D navigation solution that is stable and continuously available, even during periods when satellite signals are blocked.



- **AML Base-X2 Sound velocity profiler**

This rugged shallow water logging instrument is designed for profiling in coastal water, high speed 25Hz sampling ensures excellent data resolution. A great benefit is that the Base X2 connects through Wi-Fi with your PC and downloads the cast upon lifting the sensor out of the water.

- **QPS QINSy**

This is an integrated navigation system software package used extensively worldwide for acquiring and processing multibeam data. A template has been prepared for the usage of above mentioned equipment.

- **Ruggedized Rimowa transport case**

A lightweight Polycarbonate multiwheel case with electronic tag system and custom made reinforced inlay.

### Set benefits

- Transportable as check in luggage by any airline (weight <25 kg)
- Full integrated and ready to use
- Rapidly deployable at any vessel
- Simple ethernet interface
- Low power consumption. The set can be operated for a full day on a car battery.
- ITAR Free

## Seabed portable lightweight Multibeam set specifications

## Contact us

For more specific information concerning how we can assist your organization's needs, please call +31(0)20 636 84 43 or visit our website for more information & all our contact details, [www.seabed.nl](http://www.seabed.nl)

Seabed portable lightweight multibeam set			
NORBIT WBMS Sonar		AML BASE-X2	
Swath Coverage Range Resolution Number of beams Operating Frequency  Ping Rate Depth Range Resolution Voltage Interface Standard Cable Length	7-210° (shallow water IHO special order >155°) <10mm (acoustic) 256/512 EA & ED 400kHz w/80kHz bandwidth (Freq. Agility 200-700kHz) (low freq. mode and high freq. ultra resolution mode) Up to 50Hz, adaptive 0.2-275m (160m typical) 0.9° across, 1.9° along @400kHz. Option: along 0.9°, 10-28VDC or 100-240VAC (ROV direct: 22-29VDC) Ethernet 8m split cable	SV Xchange  P Xchange  Depth Input Voltage Operating Temperature Operating Time Scan Communications	Range: 1375 to 1625 m/s Precision: +/-0,006 m/s Accuracy: +/-0,025 m/s Up to 100 dBar Precision: +/-0,03%FS Accuracy: +/-0,05%FS 100m 7,5 to 26 VDC “-20° C to +45° C 12 Hours Up to 25 HZ WIFI, RS-232, RS-485
SGR7-D-Sx		SBD-IMU-Sx	
Dual antenna Position Accuracy Maximum Data Rate Time Accuracy Input Voltage Interface Memory	GGL L1 L2 0.01m + 1ppm (RTK mode) Up to 100Hz (depending on IMU) 20ns RMS +9to+36v 2x ethernet, 3x serial com, IMU and I/O 16 GB Onboard Memory	Heading Accuracy Pitch/Roll Accuracy Heave (Instantaneous) Heave (Post Processed) Waterproof	0,01 Degree 0,01 Degree (based on S2) 5cm or 5% 3,5cm or 3,5% W.I.E. 30m
Power consumption complete set 58.2W		Dimensions: 400 x 370 x 720 mm Colour: Black Wheels: Yes Total Weight 22,5kg	
QINSy hydrographic data acquisition, navigation and processing software package			
Optional: QINSy Qimera, Qinsy SSS add on Optional: Z300 Lidar Optional: Novatel Waypoint Inertial Explorer			

Specifications are subject to change without prior notification.



Getting to the bottom of things