



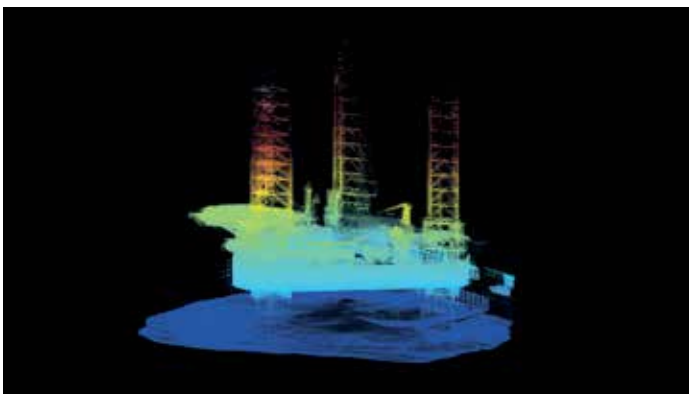
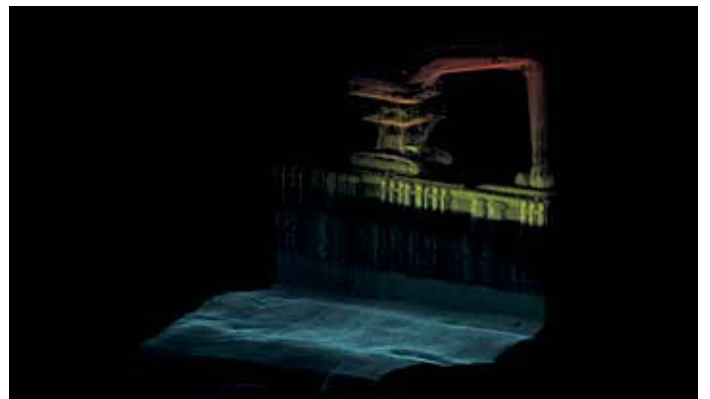
## Z300 iLiDAR

### Turnkey Mobile LiDAR System For complete above water point cloud

The Z300 iLiDAR represents the very latest in dynamic geospatial data collection technology. The system comes fully calibrated and ready to operate, Delivering up to 320,000 data points per second the system has been designed to be simple to mobilize and easy to operate without the need for specialized training or qualifications. Being able to rapidly acquire accurate geospatial data in real time,

without the need for post processing, not only offers a number of cost and efficiency benefits to existing operations, it also helps create new business and market opportunities.

The Z300 iLiDAR is an all-new multi-sensing concept that combines multiple tightly integrated sensors into one hardware platform with a single LAN connection to survey laptop. Supported sensors include any combination of bathymetric MultiBeam Echo-Sounder, Forward Looking Sonar, Forward Looking Bottom Detection and LiDAR.



## Z300 iLiDAR technical specifications

## Contact us

For more specific information concerning how we can assist your organization's needs, please call +31(0)20 636 84 43 or visit our website for more information & all our contact details, [www.seabed.nl](http://www.seabed.nl)

<b>Infrared laser module</b>	1-20Hz-time of flight measurements with dual returns
<b>Wave length peak</b>	905nm (typically)
<b>Frame rate</b>	5-20Hz (10Hz default)
<b>Wave length peak</b>	905nm (typically) class 1 eye safe
<b>Field of view</b>	32°/360° (depending on type of mounting)
<b>Output up to</b>	300.000 points per sec.
<b>Angular accuracy</b>	2° between every of the laser/detector pairs
<b>Angular resolution</b>	0.1°-0.4°
<b>Field of view</b>	30° VER., 360° HOR
<b>Range</b>	100m
<b>Power</b>	8W (typical)
<b>Voltage</b>	9-36VDC
<b>Accuracy</b>	<2cm
<b>Dimensions (dia. x h x l)</b>	103mm x 130mm x 150mm
<b>Weight</b>	1.5kg

Specifications are subject to change without prior notification.

